

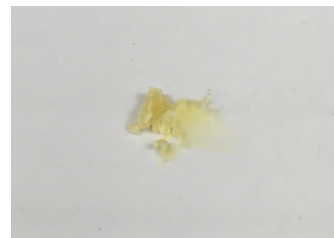
CERTIFICATE OF ANALYSIS No.: 2021-4320

CLIENT

KANNA STAR Sp z.o.o., Żbikowska 13
PL-05800 Pruszkow, Poland

SAMPLE

O2.0321D



Sample condition: SUITABLE

Sample ID: 211582

Sample type: Resinous material

Batch No.:

Work order: 2021-105034

Analysis ID: 2021_087

Method ID: PHL_RPC_12C

Method SOP: MET-002

Sample received: 15/04/2021

Start of analysis: 16/04/2021

End of analysis: 19/04/2021

Analyst: Aleksander Jefim

CANNABINOID PROFILE	Concentration [% w/w]	Expanded uncertainty [% w/w]	Graphic presentation of relative cannabinoid concentration
CBDV - Cannabidivarin	0.161	0.029	_____
CBDA - Cannabidiolic acid	< LOQ	n/a	_____
CBGA - Cannabigerolic acid	0.049	0.015	_____
CBG - Cannabigerol	70.6	4.9	████████████████████
CBD - Cannabidiol	2.51	0.13	█_____
THCV - Tetrahydrocannabivarin	< LOQ	n/a	_____
CBN - Cannabinol	0.075	0.016	_____
CBC - Cannabichromene	3.17	0.16	█_____
THC - Δ-9-Tetrahydrocannabinol	0.504	0.055	█_____
THCA - Δ-9-Tetrahydrocannabinolic acid	< LOQ	n/a	_____
8-THC - Δ-8-Tetrahydrocannabinol *	< LOQ	n/a	_____
CBL - Cannabicyclol *	0.089	0.020	_____

The results marked by * relate to non-accredited activity.

Units and abbreviations: % w/w = weight percent, < LOQ = below the limit of quantitation (0.03 % w/w), ND = not detected, n/a = not available.

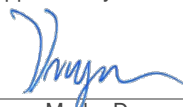
The results given herein apply only to the sample as received. **Expanded Uncertainty** was calculated using coverage factor $k = 2$, corresponding to a double standard uncertainty and characterizes the interval value in which it is possible to expect the real value with a probability of 95%. This is stated according to the ISO/IEC Guide 98-3.

Total or partial reproduction of this document is not allowed without the permit from PharmaHemp d.o.o. The document does not substitute any other legal document.

Date issued:

20/04/2021

Approved by:



mag. Marko Dragan

Analytical Laboratory Manager

Authorized by:



dr. Boštjan Jančar

Chief Technology Officer

End of Certificate